



84520 97183 | 99308 08259 | 27885000

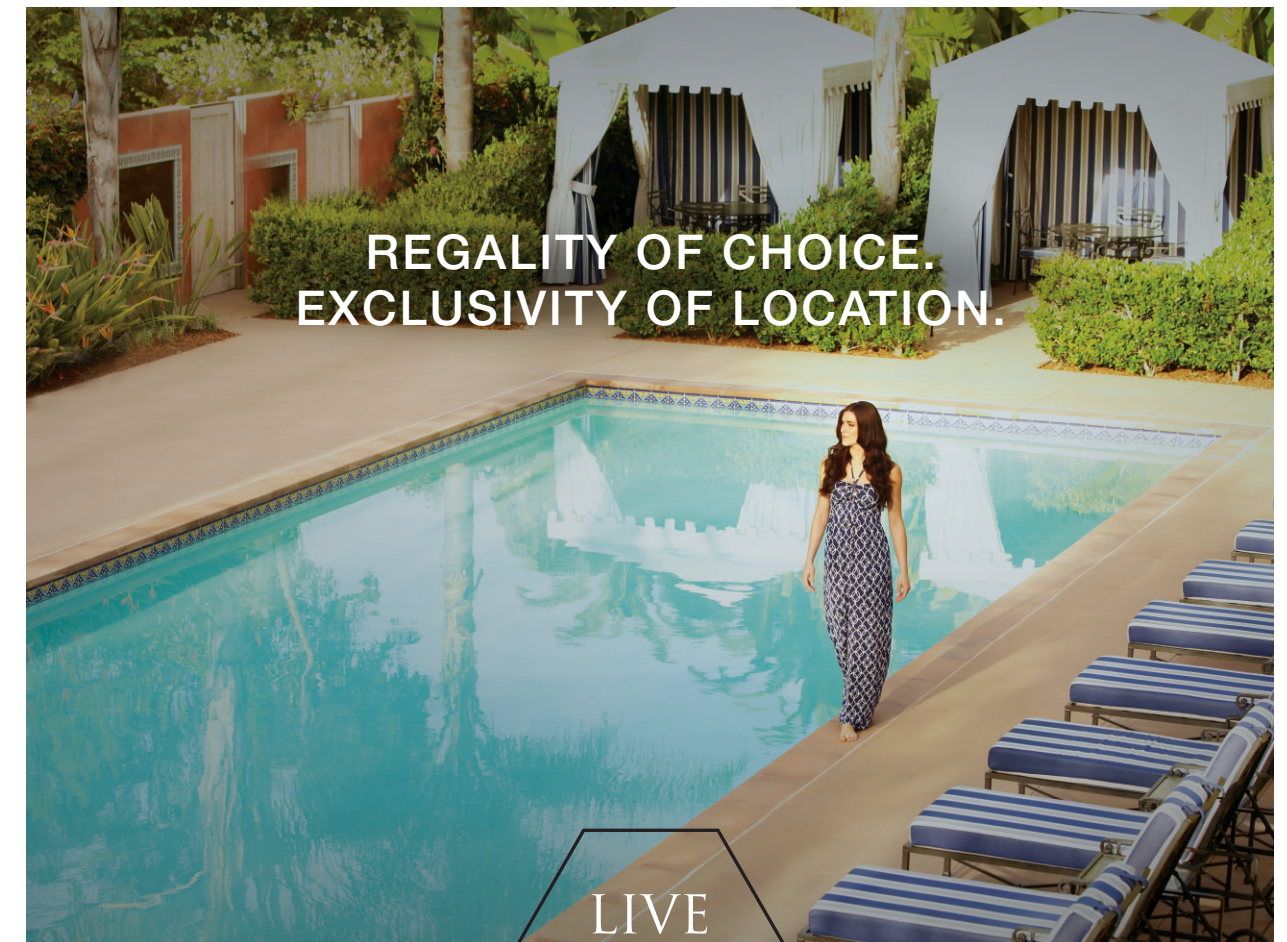
SMS 'NEELSIDHI' TO 56767

**Sales Office:** Plot No. 21, Opp. Ryan St. Joseph High School, Sector - 11, Khanda Colony, New Panvel (W), Navi Mumbai - 410206

**Corporate Office:** The Emerald, 2nd Floor, Plot No. 195-B, Besides Neel Sidhi Towers, Sector - 12, Vashi, Navi Mumbai - 400703.

This project is mortgaged to Kotak Mahindra Prime Ltd

Disclaimer: The plans, specifications, images and other details herein are only indicative and the developer reserves the right to change any or all of these in the interest of the development as per applicable rules & regulations. This printed material does not constitute an offer and/or contract of any type between the developer and the recipient. This contains artistic impressions and stock images for illustrative purpose and no warranty is expressly or impliedly given that the completed development will comply in any degree with such artist's impression as depicted. Any purchaser of this development shall be governed by the terms & conditions of the agreement for sale entered into between the parties and detailed disclosures on the MahaRERA website: <https://maharera.mahaonline.gov.in> under Maha Rera registration no P52000017740 and no details mentioned in this printed material shall in any way govern such transaction. T & C apply.



LIVE  
REGAL

— neelsidhi —  
**REGALIA**

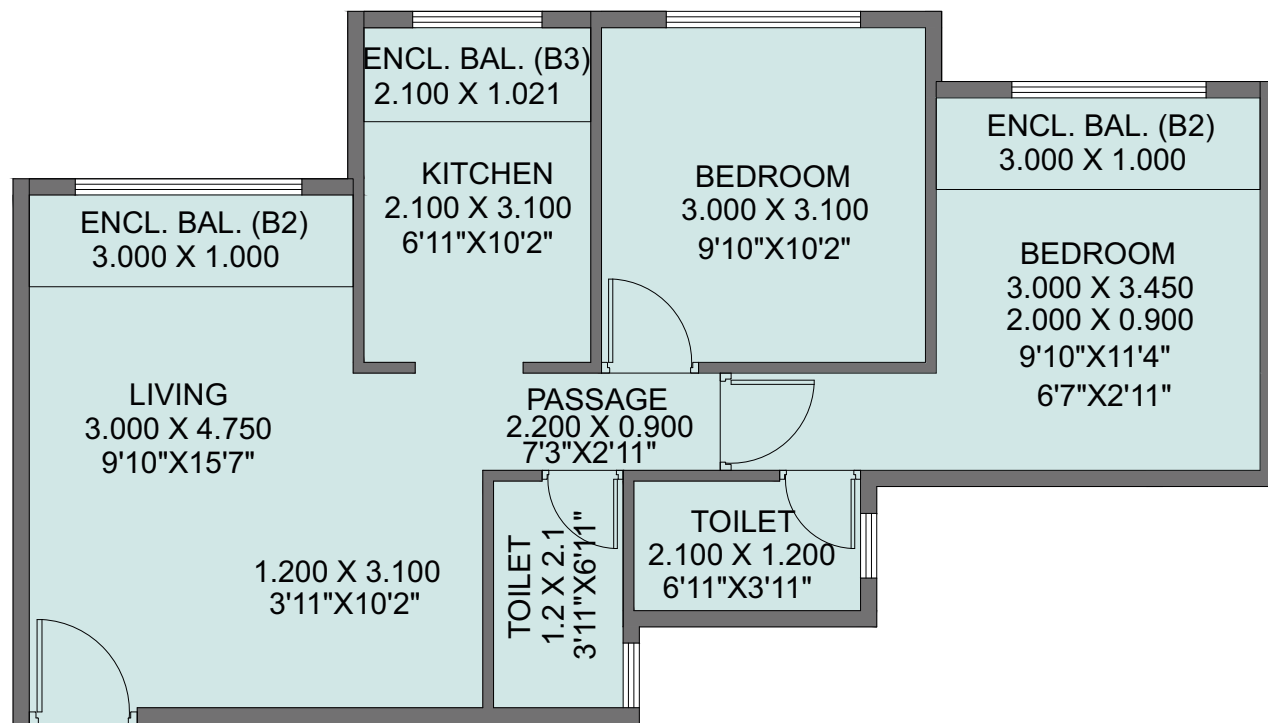
2 & 3 BHK HOMES AT KHANDA COLONY, NEW PANVEL (W)

CIDCO TENDER PLOT | EXCLUSIVE HOUSING PROJECT | STILT + 12 STOREY  
PODIUM GARDEN WITH SWIMMING POOL & FITNESS CENTER

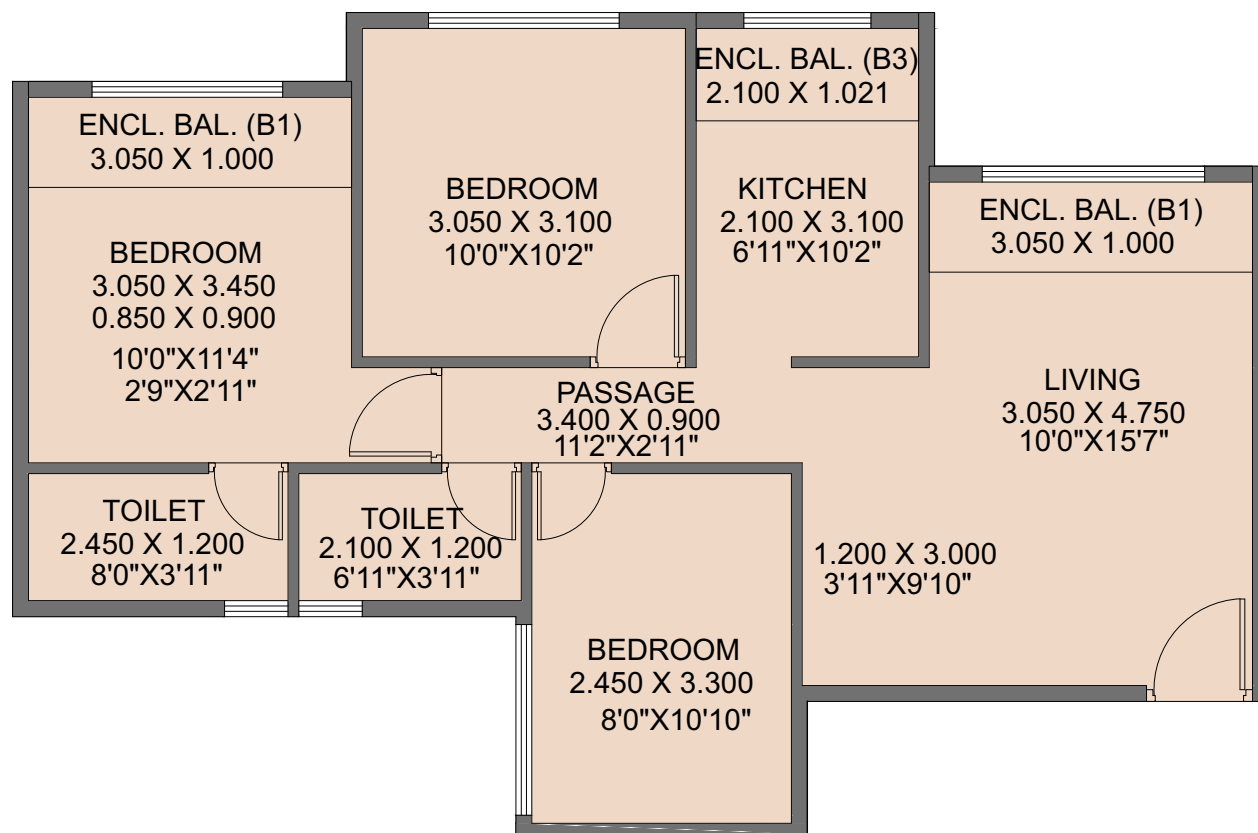


MahaRERA NO.: P52000018841  
FOR WING A (PART)

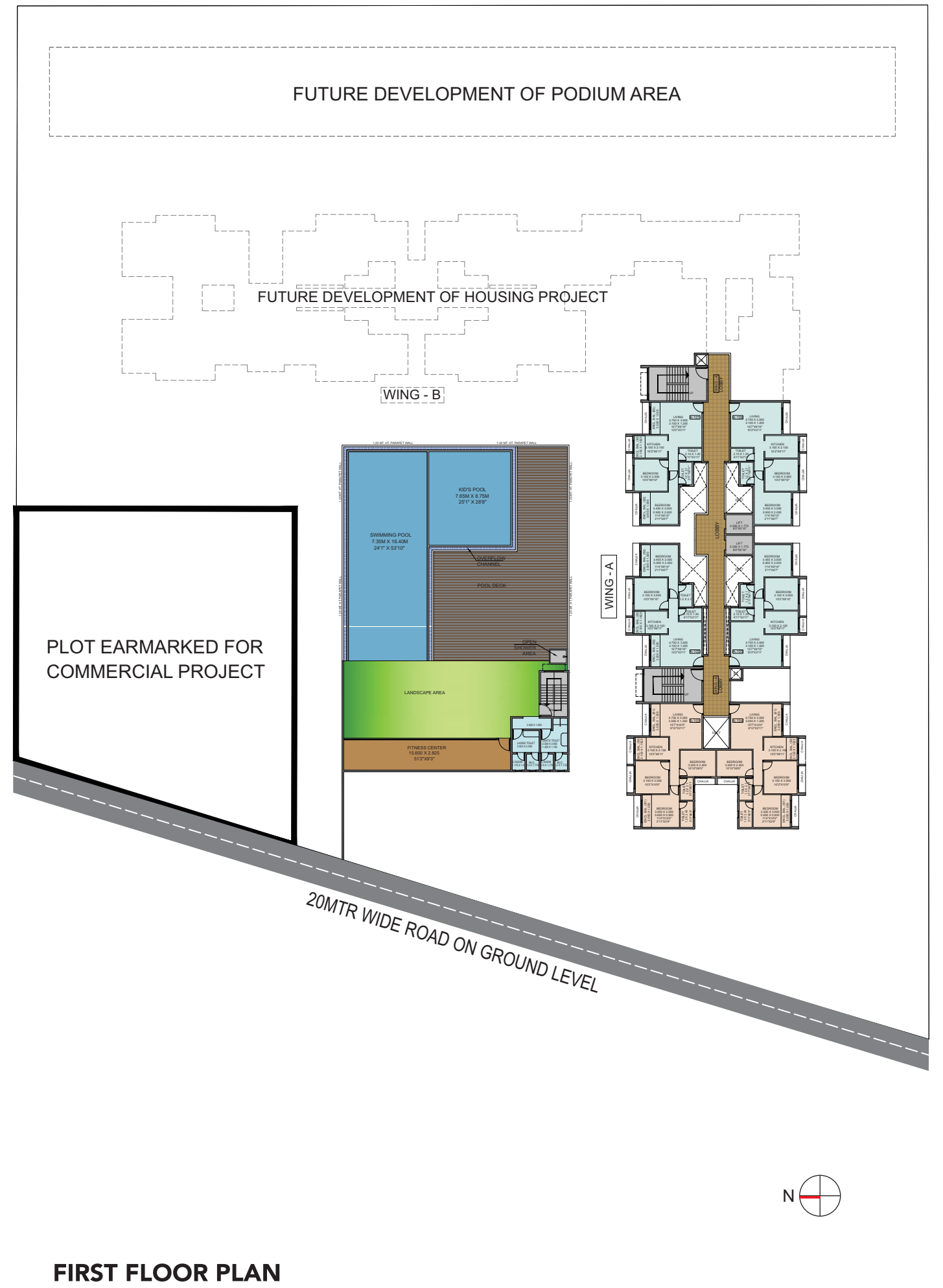
Available on website  
<https://maharera.mahaonline.gov.in>



**2 BHK PLAN**



**3 BHK PLAN**



**FIRST FLOOR PLAN**

